

QUADPROCESS

4 CHANNEL CURRENT DATA LOGGER



Features

- 16-bit readings provide high resolution
- User-defined engineering units
- Programmable start time and recording interval
- Low cost
- Real-time operation
- Reusable
- Compact
- User-friendly

Applications

- 4 to 20 mA recording
- pH recording
- Low level signal monitoring
- Photovoltaic studies
- Battery studies
- Biological sensor monitoring
- Factory process control
- Research and development
- Medical and Pharmaceutical
- Environmental studies



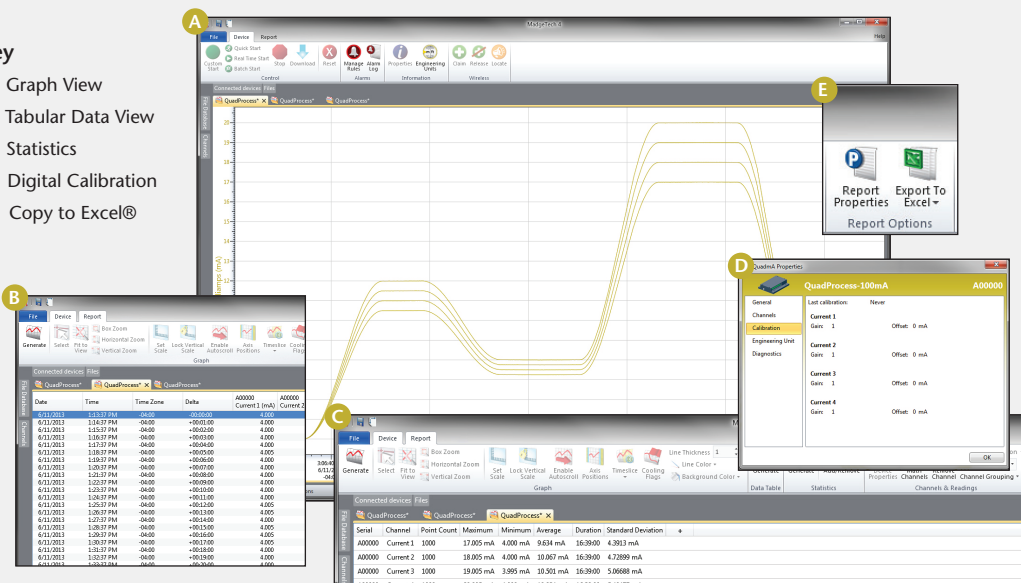
The QuadProcess is a four channel, battery powered, stand alone current recorder. This is an all-in-one compact, portable, easy to use device that will measure and record up to 32,767 measurements per channel.

The storage medium is non-volatile solid state memory, providing maximum data security even if the battery becomes discharged. The device can be started and stopped directly from your computer and its small size allows it to fit almost anywhere. The QuadProcess makes data retrieval quick and easy. Simply plug it into an empty COM or USB port and our user-friendly software does the rest.

MADGETECH DATA LOGGER SOFTWARE

Key

- A** Graph View
- B** Tabular Data View
- C** Statistics
- D** Digital Calibration
- E** Copy to Excel®



Software Features:

- Multiple graph overlay
- Statistics
- Digital calibration
- Zoom in/ zoom out
- Lethality equations (F0, PU)
- Mean Kinetic Temperature
- Full time zone support
- Data annotation
- Min./Max./Average lines
- Data table view
- Automatic report generation
- Summary view
- Multilingual

QUADPROCESS SPECIFICATIONS*

*SPECIFICATIONS ARE SUBJECT TO CHANGE WITHOUT NOTICE. SPECIFIC WARRANTY REMEDY LIMITATIONS APPLY. CALL 1-603-456-2011 OR GO TO WWW.MADGETECH.COM FOR DETAILS.

Nominal Range:	± 1 mA	± 25 mA	± 100 mA
Measurement Range:	± 1.5 mA	± 30 mA	± 120 mA
+/- Input Voltage Range:	0 to 2.5 V	0 to 2.5 V	0 to 2.5 V
Resolution:	0.05 μ A	1 μ A	5 μ A
Calibrated Accuracy:	± 0.5 %FSR	± 0.1 %FSR	± 0.1 %FSR
Input Impedance:	50 Ω	10 Ω	2 Ω
Overload Protection:	± 20 mA	± 100 mA	± 125 mA
Specified Accuracy Range:	Nominal range @ 25 °C		
Input Connection:	4, 3-input removable screw terminals		
Analog Conversion Time:	133 ms		
Frequency Rejection:	60 Hz		
Temperature Coefficient:	< 100 ppm/°C; < 50 ppm/°C typical		
Engineering Units:	User may define units up to 10 characters in length. This value is stored within the device.		
Scale Factor:	User may program any desired scaling factor from $\pm 1.000E-31$ to $\pm 9.999E+31$. The scaling factor is stored within the device.		
Start Modes:	Software programmable immediate start or delay start up to six months in advance		

Memory:	32,767 readings per channel; 131,068 total readings
Reading Rate:	1 reading every second up to 1 reading every 12 hours
Real Time Recording:	May be used with PC to monitor and record data in real-time
Calibration:	Digital calibration through software
Calibration Date:	Automatically recorded within device
Battery Type:	9V lithium or alkaline battery included; user replaceable
Battery Life:	1 year typical
Time Accuracy:	± 1 minute/month at 20 °C (RS232 port not in use)
Data Format:	Date and time stamped A, mA, μ A, engineering units specified through software
Software:	XP SP3/Vista/Windows 7/Windows 8
Computer Interface:	PC serial or USB (interface cable required); 2,400 baud
Operating Environment:	-20 °C to +60 °C, 0 %RH to 95 %RH non-condensing
Dimensions:	3.5 in x 4.4 in x 1.0 in (89 mm x 112 mm x 26 mm)
Weight:	13 oz (370 g)
Common mode voltage must be less than 3 volts. All inputs must be within 3 volts of all other inputs.	

BATTERY WARNING: DISCARD USED BATTERY PROMPTLY. KEEP OUT OF REACH OF CHILDREN. DO NOT DISPOSE OF IN FIRE, RECHARGE, PUT IN BACKWARDS, DISASSEMBLE, OR MIX WITH OTHER BATTERY TYPES. MAY EXPLODE, FLAME OR LEAK AND CAUSE PERSONAL INJURY.

ORDERING INFORMATION

MODEL	DESCRIPTION
QUADPROCESS-1mA	± 1 mA 4 Channel Current Recorder
QUADPROCESS-25mA	± 25 mA 4 Channel Current Recorder
QUADPROCESS-100mA	± 100 mA 4 Channel Current Recorder
IFC110	Software, manual and RS232 interface cable
IFC200	Software, manual and USB interface cable
Calibration Certificate	Calibration Certificate available for data logger
U9VL-J	Replacement battery for QuadProcess

ASK ABOUT OUR OTHER DATA LOGGERS

- Temperature
- Humidity
- Pressure
- pH
- Level
- Shock
- LCD Display
- Pulse/Event/State
- Current
- Voltage
- Wireless
- Intrinsically Safe
- Spectral Vibration
- Motion

For Quantity Discounts call 603-456-2011 or email sales@madgetech.com